

## OSIM 200-FL - TEST BENCH FOR HYDRAULIC HOSES FLEXING TEST VERSION



The bench tests, depending on the type of intensifier installed, allows also accommodate pipes of large diameter. The digital control pressure and flow rate test carried out directly on the pump, combined with the Moog servovalve with high efficiency, allows to maintain unchanged the sensitivity of the test both for small pipes and for large.

To allow testing of pipes with a larger cross-section, the unit can supply up to 800 cc/pulse at a maximum pressure of 560 bar in a test with a square wave.

For testing pipes of small cross-section can be adopted in a configuration that allows to supply up to 200 cc/pulse at a maximum pressure of 1250 bar.

The electro/electronic management of the tests bench is done by PC, this allows to operate with different parameter configurations for testing stored and reused, to examine the square wave in real time and graphs for the various tests.

The test bench to leak and pulses allows the execution of static tests, in rotation with flexion in compliance with the following standards which define guidelines for "Methods of test for hose assemblies":

### STATIC TEST: SQUARE WAVE PULSE

- ◆ SAE J343 D;
- ◆ ISO 6803;
- ◆ UNI 6605;
- ◆ DIN 20024.
- ◆ ISO 6772;

### FLEXING TEST: PULSE

- ◆ WITH BENDING IN ACCORDANCE WITH ISO 6802;
- ◆ WITH BENDING IN ACCORDANCE WITH ISO 8032.
- ◆ WITH BENDING IN ACCORDANCE WITH SAE J1405;



FLUIDS LIFE TIME EXTENSION

LIFE INCREASE OF PARTS AND EQUIPEMENT

REDUCING DOWNTIME AND MAINTENANCE COST

CONTAMINATION MANAGEMENT OF SYSTEMS & FLUIDS

FLUIDS MONITORING & LABORATORY ANALYSIS

### SERVICES

*Technical Support*

*Installation and Setup*

*Checking & Maintenance*

*Hardware Support*



## MAIN FEATURES

- ◆ Work area with large size
- ◆ Tubular welded with stainless steel tank of 120 lt for the tests;
- ◆ Tubular welded with stainless steel tank of 350 lt for the auxiliary;
- ◆ Motor pump unit for oil test;
- ◆ Motor pump unit with digital control of flow rate and pressure;
- ◆ Motor pump unit for offline system;
- ◆ Filter off-line from 6 microns for the auxiliary circuit;
- ◆ Air filters from 20 µm to pre-filtering inlet air;
- ◆ Pressure filter 25 µm for pre-filtration oil flushing;
- ◆ Filter piloting control by 7 µm.

## TECHNICAL DATA

Maximum flow rate for test / pulse*	800cc with multiplier 1:2,1 Pmax 560 bar 500cc with multiplier 1:2,54 Pmax 660 bar 400cc with multiplier 1:3,14 Pmax 820 bar 210cc with multiplier 1:6 Pmax 1250
Pmax*	1250 bar with multiplier 1:6
Pmax oil supply multiplier	28 Mpa
Power	90 kW
Tmax	125°C
N° max test hoses	8
Testing conditions	static + flexing (rotation)
Hose minimum nominal diameter	1/4"
Hose maximum nominal diameter (static)	3"
Hose nominal diameter (max rotation)	2"
Impulse frequency	0,1 ÷ 1,5 Hz
N° samples min *	12 (8) samples - diameter ≤1" 4 samples WP=560 bar - diameter 1 1/4" 3 / 4 samples WP=420 bar WP (R15) - diameter 2" 2 samples WP=350 bar - diameter 3" 2 samples WP=80 bar - diameter 3.1/2" Safety factor till 133% of W.P.
Max manifolds distance	ISO6802 configuration: approx. 2400 mm ISO6803 configuration: approx 1700 mm (90° config.)
Min manifolds distance	ISO6802 configuration: approx. 130 mm ISO6803 configuration: approx. 80 mm
PC + Report	On board
Manifold Rotation Unit	Min Bend Radius 80 mm Max Bend Radius 500 mm
Dimension	8000 x 2200 x 3800h mm
Optional :	
	◆ Support group manifold mobile performance tests flexing;
	◆ Cooling oil test

\* According to the different multipliers installed



OilSafe  
S.r.l.  
Via Toscanini, 209  
41122, Modena (MO)

e-mail: info@oilsafe.it  
web: www.oilsafe.it  
C.F./P.I.: 02589600366

FLUIDS LIFE TIME EXTENSION

LIFE INCREASE OF PARTS AND EQUIPEMENT

REDUCING DOWNTIME AND MAINTENANCE COST

CONTAMINATION MANAGEMENT OF SYSTEMS & FLUIDS

FLUIDS MONITORING & LABORATORY ANALYSIS

### SERVICES

*Technical Support*

*Installation and Setup*

*Checking & Maintenance*

*Hardware Support*

FLUIDS LIFE TIME EXTENSION

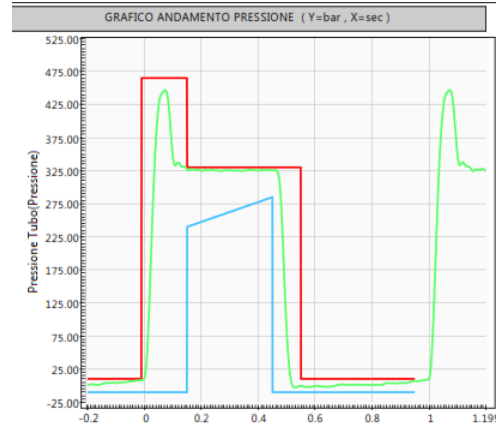
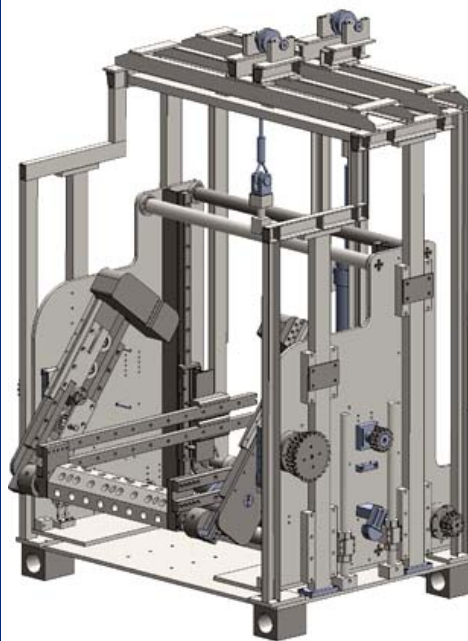
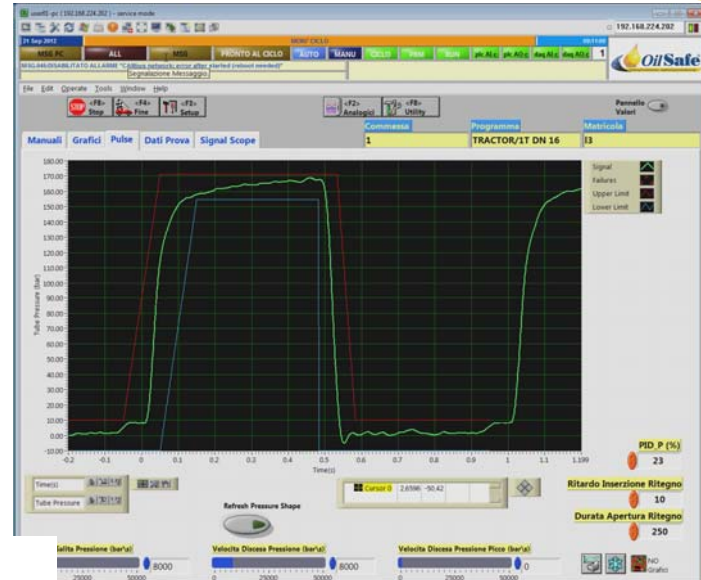
LIFE INCREASE OF PARTS AND EQUIPMENT

REDUCING DOWNTIME AND MAINTENANCE COST

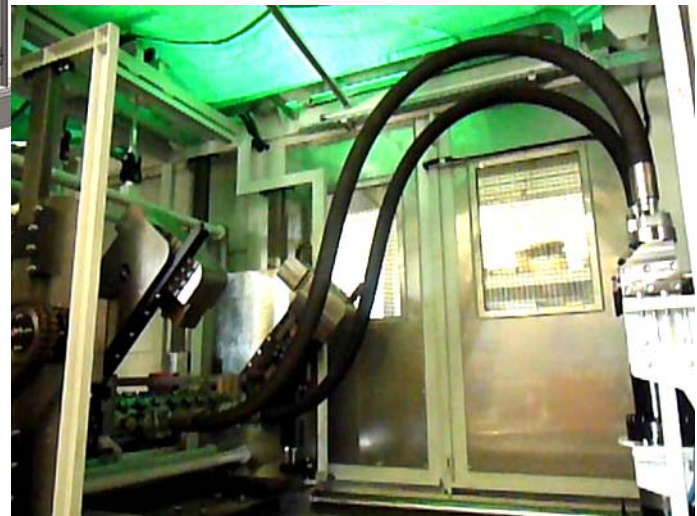
CONTAMINATION MANAGEMENT OF SYSTEMS & FLUIDS

FLUIDS MONITORING & LABORATORY ANALYSIS

*Viewing using the OilSafe software of the square wave during the tests*



*View of the interior of the chamber during the execution of a test*



**SERVICES**

- Technical Support*
- Installation and Setup*
- Checking & Maintenance*
- Hardware Support*



OilSafe S.r.l.  
Via Toscani, 209  
41122, Modena (MO)  
Phone +39.059.285294

e-mail: info@oilsafe.it  
web: www.oilsafe.it  
C.F./P.I.: 02589600366